

MAINELY EXPERIENCES

FIRE & FORM GLASS BLOWING EXPERIENCE

Step into the glowing heart of the furnace and discover the magic of molten glass in this immersive, hands-on class.

Over the course of 2–2.5 hours, you'll learn the core fundamentals of glassblowing—how to gather, shape, add color, and sculpt glass using professional tools and time-honored techniques.

No experience is required—just curiosity and a willingness to explore your creativity. Through guided skill-building and repetition, you'll gain confidence working with hot glass before creating one finished piece to take home.

Choose your creation:

- Cup
- Floppy Bowl
- Vase
- Paperweight

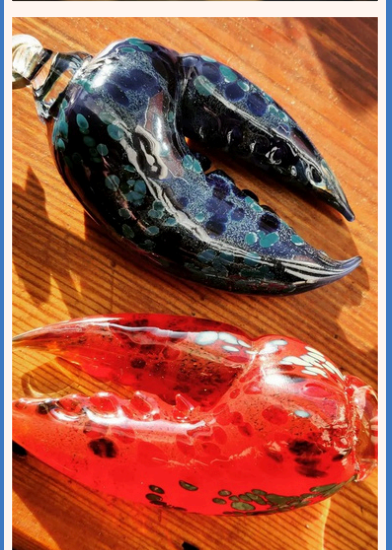
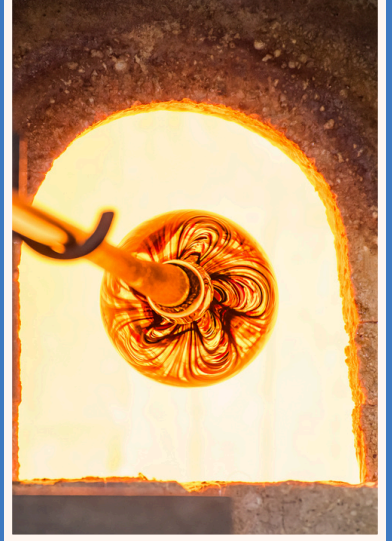
Your instructor, a graduate of The Massachusetts College of Art, designs and creates all of the studio's gallery pieces and personally teaches every class. With step-by-step instruction at the bench, marver, and pick-up stations, you'll be supported through each stage of the process.

The studio features a 200-pound Spruce Pine glass furnace and is fully outfitted by Wet Dog Glass, known for crafting the highest-quality glass-melting equipment in the world. Nestled inside a historic mill building with gorgeous brick walls, original steel floors, and a dedicated gallery space, it's the perfect atmosphere for creativity to thrive.

To keep you comfortable, bottled water and seltzers are provided throughout the class (the furnace creates a naturally warm environment).

After your piece is complete, unwind with a charcuterie selection and enjoy a stroll through the gallery, discovering the unique works crafted by local artisan glass blowers.

This unforgettable class blends learning, artistry, and a touch of indulgence—ideal for anyone ready to experience the magic of glass firsthand.



[Reserve Your Private Experience](#)

[Explore the Collection](#)